

minitools



SEPDISP33

Installation instructions

Before installing the new SEPDISP33 display, please read carefully the following instructions. Our technicians, for illustrative purposes only, have made a **video tutorial** about how to repair the instrument cluster. Click on <https://video.minitools.com/SEPDISP33-en> or scan the QR code to watch it.

DON'T SKIP ANY STEP.



Ver. 4.0



www.minitools.com

WARNING: THIS PROCESS IS RECOMMENDED ONLY TO EXPERT AND QUALIFIED STAFF

NECESSARY OPERATIONS:

- Verify the voltage on the display (see steps 1 and 6)
- Replace the display (see steps 2, 3 and 4)
- Replace the capacitor (see step 5)

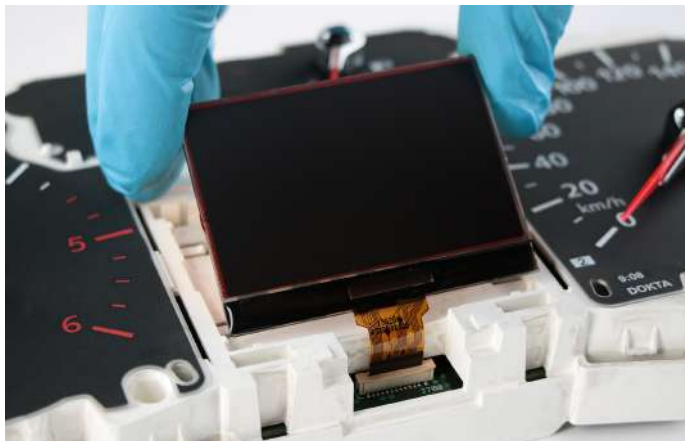
1



Open the instrument cluster, remove the original display and check the voltage shown on the label (see photo).

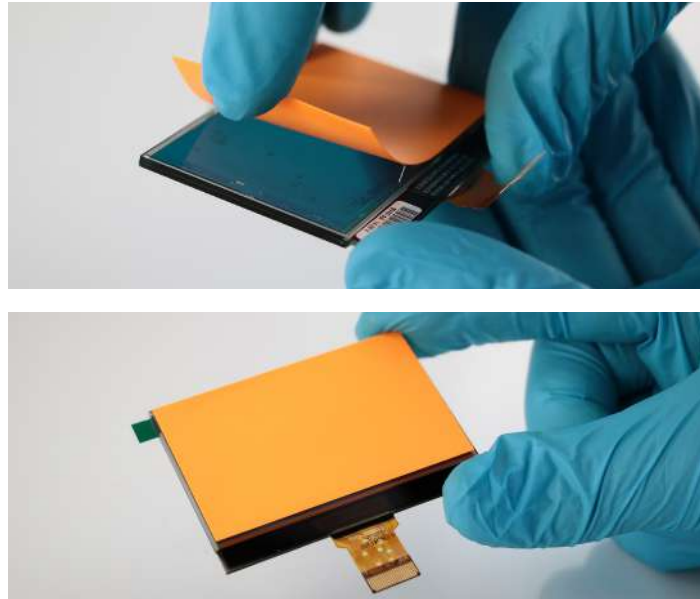
If the voltage shown on the display is higher than 14.30V, follow the instructions in step 6, once you have replaced the display. This final step is not necessary if the voltage shown on the original display is lower than 14.30V.

4



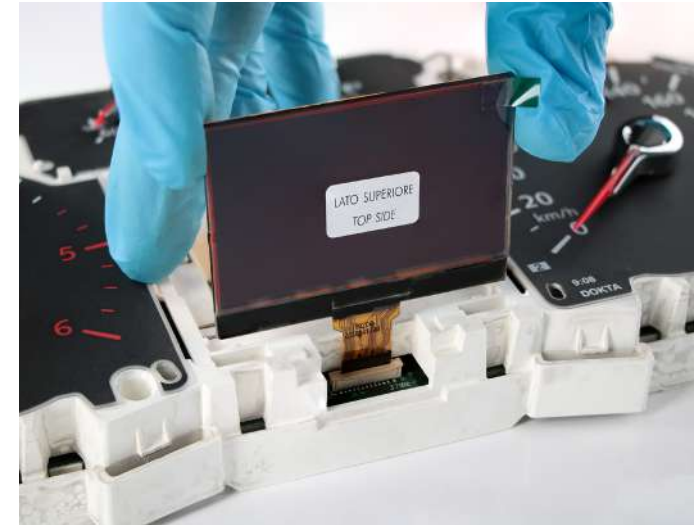
Carefully position the display in its plastic housing until it is in the correct position. Then secure the display in place with the metal frame.

2



Remove the orange film from the back of the original display and place it on the back of the new SEPDISP33 display.

3

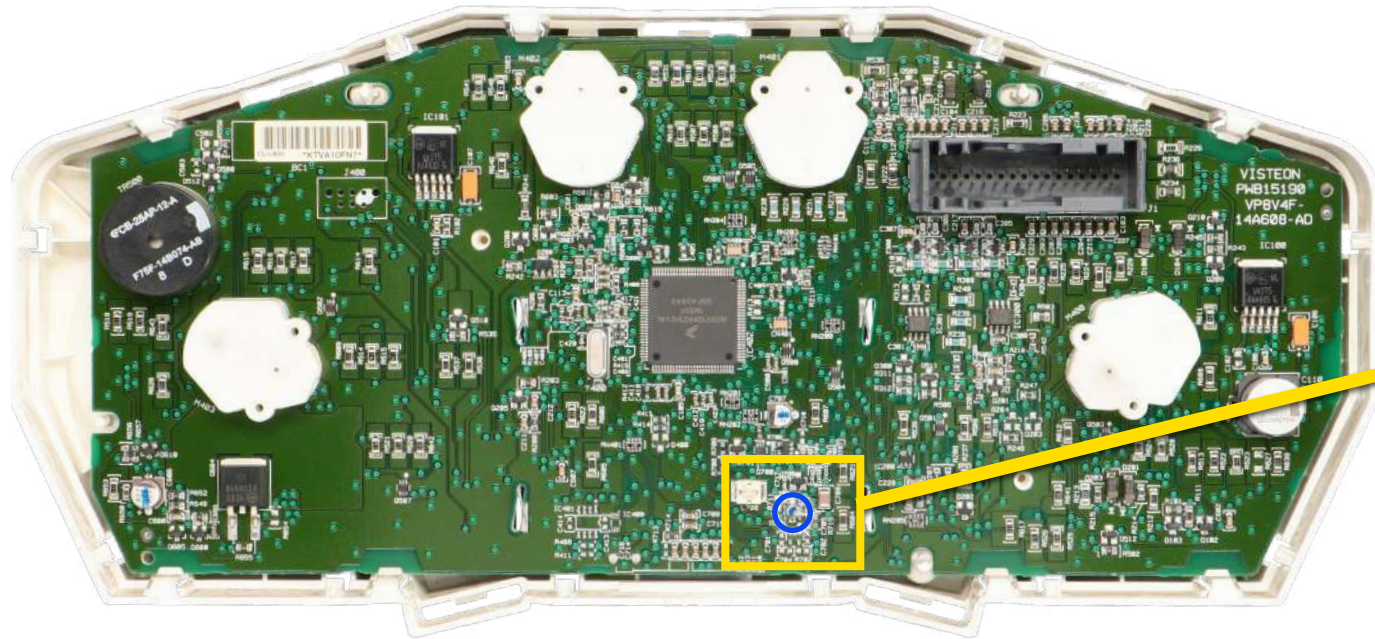


Holding SEPDISP33 display upright, insert the FPC in its connector until it is properly fitted.

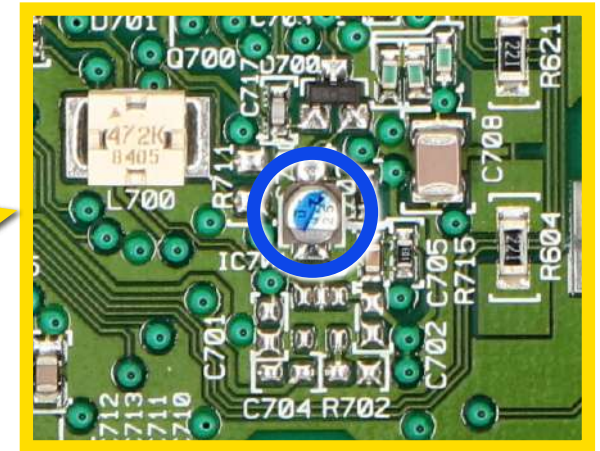
ATTENTION: this procedure must be carried out **before positioning the display in the dashboard plastic housing.**



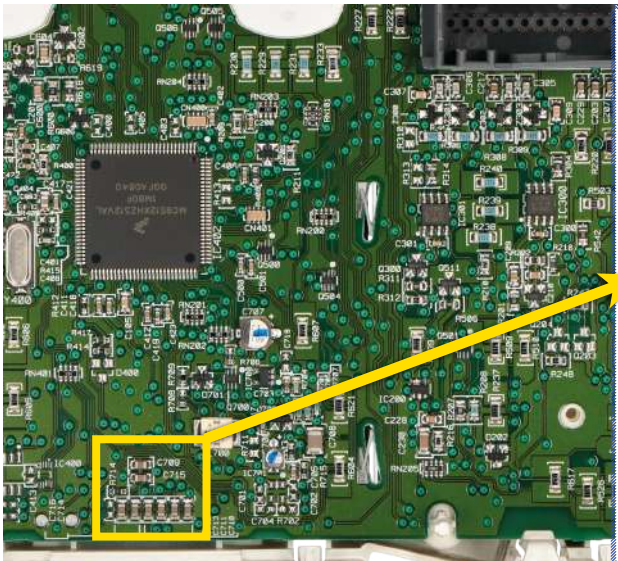
5



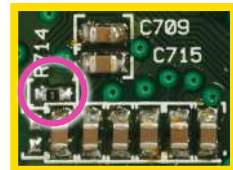
Replace the capacitor circled in blue in the detail with the one supplied with the SEPDISP33.



6

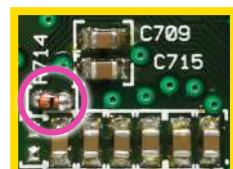


Before



Picture A

After



Picture B

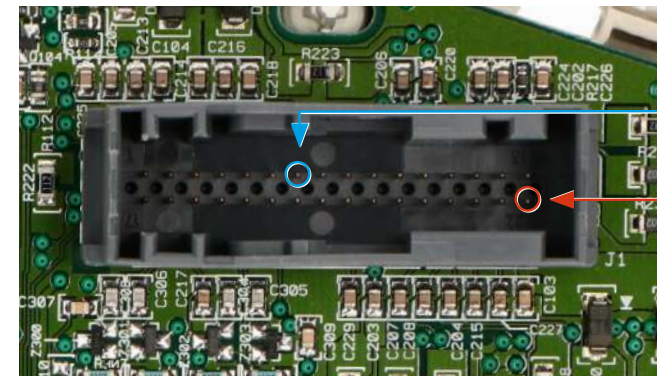
WARNING

This step must be carried out only if the voltage on the original display exceeds 14.30V (see step 1).

After installing the SEPDISP33, replace the OR resistance (picture A) with the MCL4148-TR diode (picture B) included in the package.

Ensure the diode is fitted the right way round.

7



- pin 7 GND

+ pin 32 12V

Before re-assembling the instrument cluster, power it up on a test bench (see pinout above) to verify the correct functioning of the SEPDISP33 display.

If it doesn't work correctly, make sure all steps listed have been followed.

If the problem persists after the check, please contact us sending an e-mail at info@minitools.com.