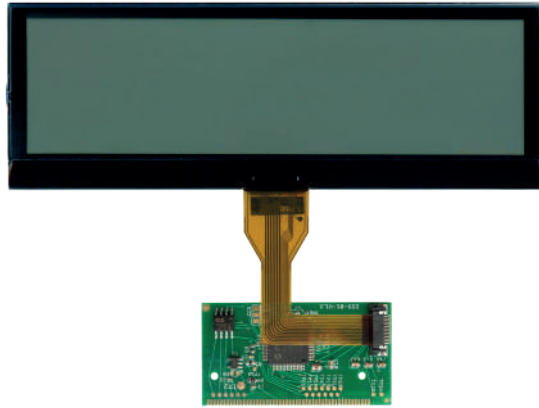




POSITIVE VERSION



SEPDISP29P

Kit supplied: LCD display + PCB

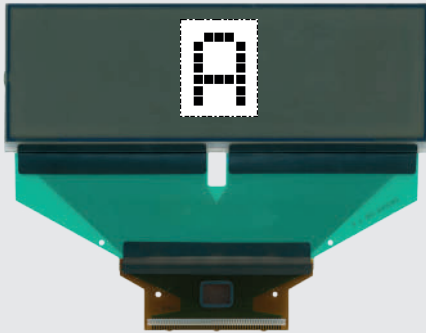
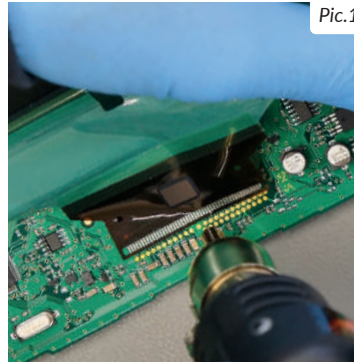
Installation instructions

Vers. 4.0

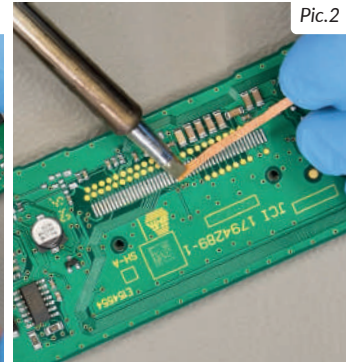


WARNING: THIS PROCESS IS RECOMMENDED ONLY TO EXPERT AND QUALIFIED STAFF.

- The display must be installed only with its related small PCB, as supplied in the original packaging;
- Before installing the new display SEPDISP29P, it is highly recommended to carefully read the following instructions and watch the video typing video.minitools.com/SEPDISP29P-BJ-en or scanning the QR CODE beside.
The video is for illustrative purpose only;
- Do not skip any steps.

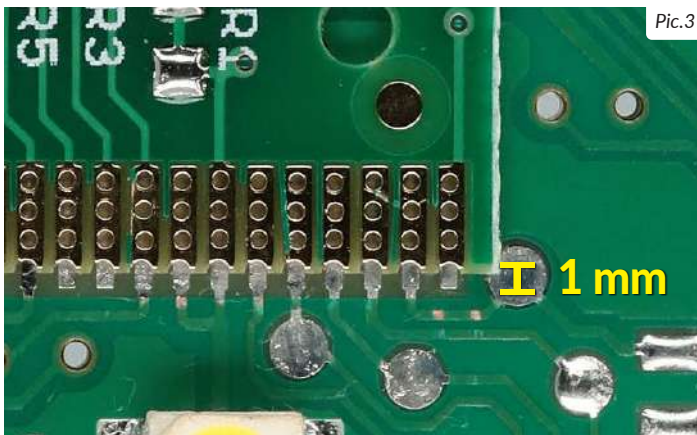
**BORG - JOHNSON CONTROLS
ORIGINAL DISPLAY***Positive version***1**

Pic.1

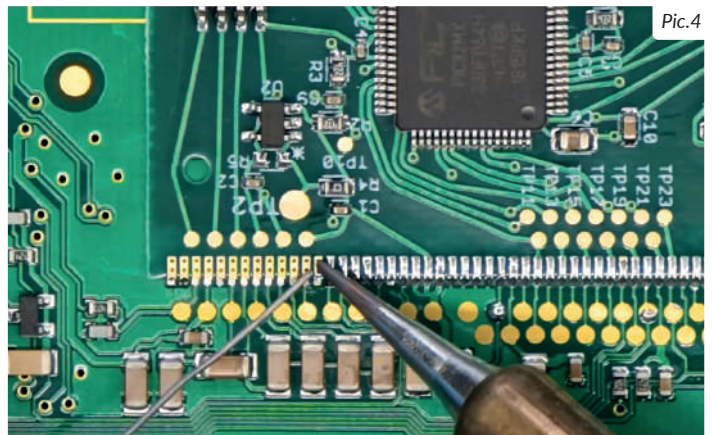


Pic.2

De-solder the original display with a hot air de-soldering iron (Pic. 1). Clean with a solder wick and chisel tip to remove any excess tin (Pic. 2). A moderate amount of flux may be used to facilitate the cleaning process. Lastly, complete the cleaning with some solvent.

2

Pic.3

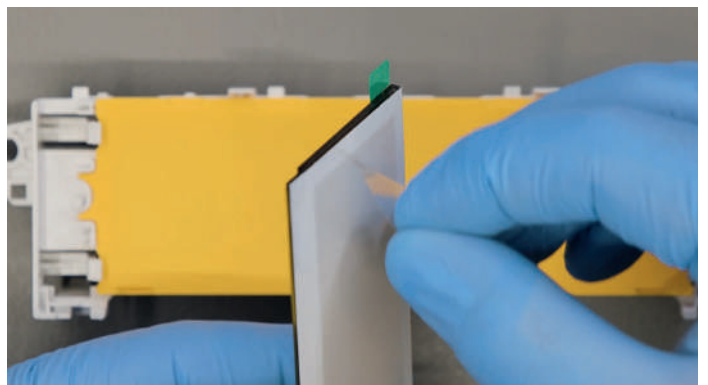
1 mm

Pic.4

Position the small PCB leaving **1mm gap**, as in picture 3, and solder each pin individually, one at the time, with **0,3mm thin solder wire** and with conical tip at **350°C** (Pic.4). In this case, **using flux is not recommended to inexperienced staff** as misusing it may damage the board irreversibly.

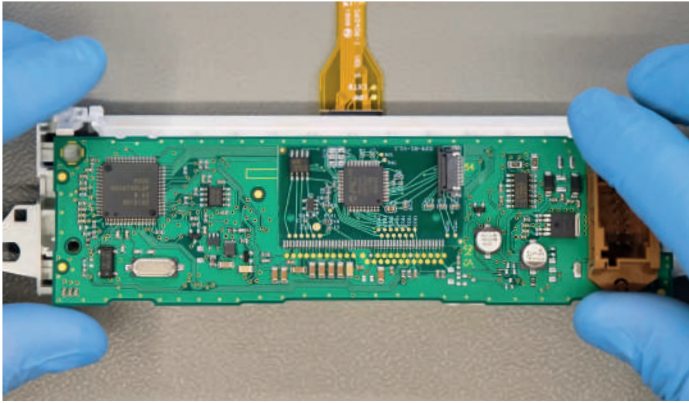
3

With a flush cutter, **cut off the central clip of the plastic base** of the display and any other plastic part positioned by the new FPC, as it may damage it when re-assembling.

4

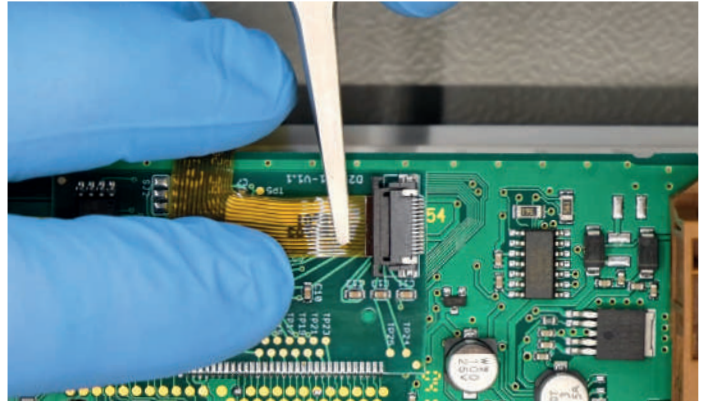
Peel off the rear protective film from the display.

5



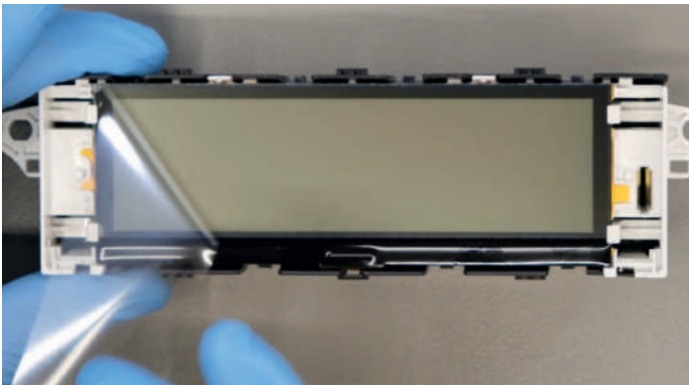
Fit the display in its housing and re-attach the board on the rear.

6



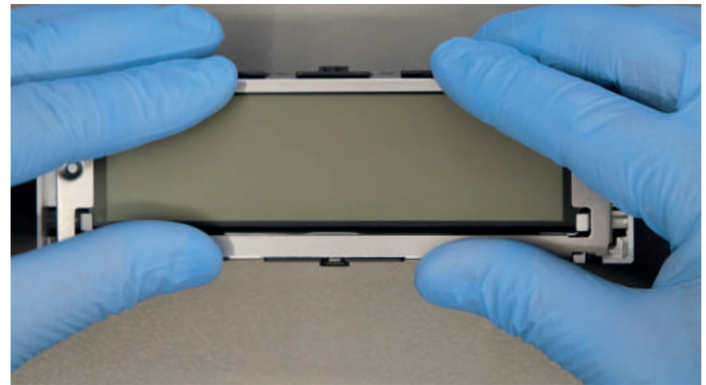
With the aid of the tweezers, insert the FPC of the new display, with contacts facing down, into the connector on the small PCB.

7



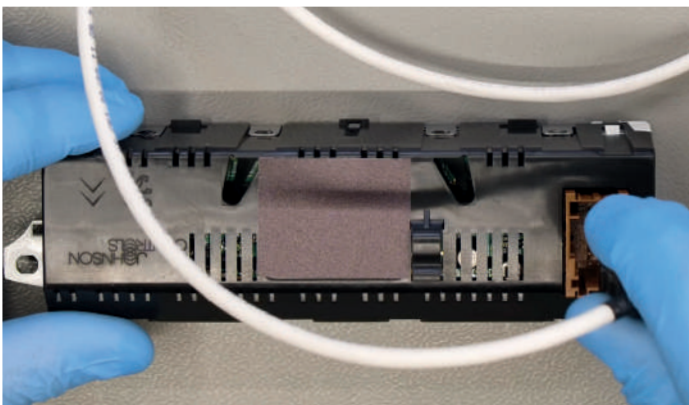
Put back the module in the rear cover, making sure not to damage the FPC. Then, peel off the front film.

8



Lastly, re-attach the metal frame.

9



Switch on the module on a test bench using the Minitools CAN BUS generator **SEP-CAN-INFO1**, or directly on the vehicle.

NOTE:

If the display won't turn on, please double check the soldering points. If the problem persists even after those checks, please send a picture of the small PCB soldered on the board at info@minitools.com.

Minitools technicians will support you to complete the repair.